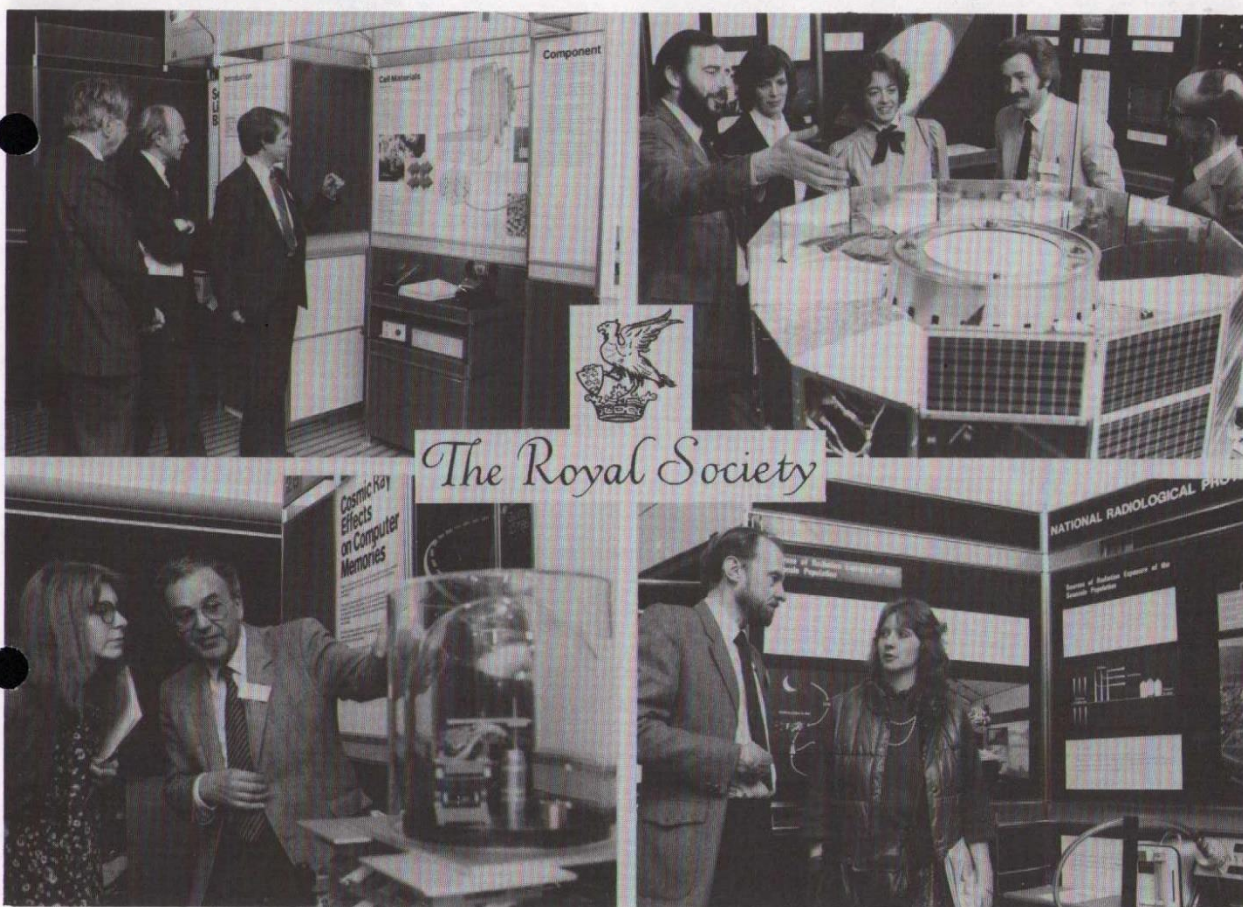


Harlequin

NEWS SHEET

HARWELL • CULHAM • JET • RUTHERFORD APPLETON • NRPB • MRC



The Royal Society

The annual Royal Society Conversazione was held in London on 9 May. At this prestigious evening event some 700 Fellows of the Royal Society and their guests saw 30 exhibits on a wide range of scientific topics. The HARWELL campus was well represented with two exhibits from the Harwell Laboratory and one each from RAL and NRPB. Photographs taken at the afternoon press preview are shown above.

Top left: Sir Leslie Fowden (centre), Chairman of the Soirée Committee, inspecting HARWELL's exhibit on the development of solid-state lithium batteries in Materials Development Division. On the right is Dr. Alan Hooper and on the left Mr. John North, both of MDD.

Top right: Mr. Trefor Edwards, Rutherford Appleton Laboratory, describing the details of the UK's satellite (full-scale prototype) to Miss Sheila James and Miss Heather Stewart, administrative staff at the Royal Society. This satellite and its complement of experiments was designed, built and operated by a unique consortium of RAL, Mullard Space Science Laboratory and university groups. On the right of the photograph is Mr. Tom Patrick of Mullards and second from right is Dr. David Southwood of Imperial College. The UK satellite, together with others from USA and West Germany, comprised the **Active Magnetospheric Particle Tracer Explorers** which in December 1984 measured the interaction between the solar wind and the plasmas of the Earth's magnetosphere.

Bottom left: Mr. David Mapper of HARWELL's Instrumentation & Applied Physics Division explaining to Glenis Moore (a staff writer from IEE's 'Electronics & Power') how a Californium 252 source has been used to measure, for the European Space Agency, the cosmic ray sensitivity of the various memories installed in the Giotto Satellite due to be launched on 2 July 1985 to encounter Halley's comet on 13 March 1986.

Bottom right: Dr. Tony Wrixon of NRPB explaining the environmental monitoring of the area around the Sellafield plant in Cumbria to Karon Campbell, Assistant Editor of Mining Journal. This work was carried out for the Advisory Group under Sir Douglas Black.

News and Views

ACKNOWLEDGEMENT

Geof Wood and wife would like to thank all at NRPB and Police Club for kind thoughts and gifts on retirement.

ST. JOHN AMBULANCE '50' CLUB

Winning draw numbers.

Date	No.
1.5.85	40
8.5.85	35

ANNUAL RAF/SIXTH AIRBORNE DIVISION MEMORIAL SERVICE will be held at the memorial near Frome Road on Saturday, 8 June at 5.30 p.m. In connection with the service and with the Harwell Village Millennium there will also be a fly-past by a Spitfire of the Battle of Britain Memorial Flight at 5.20 p.m.

ROUNDERS TOURNAMENT

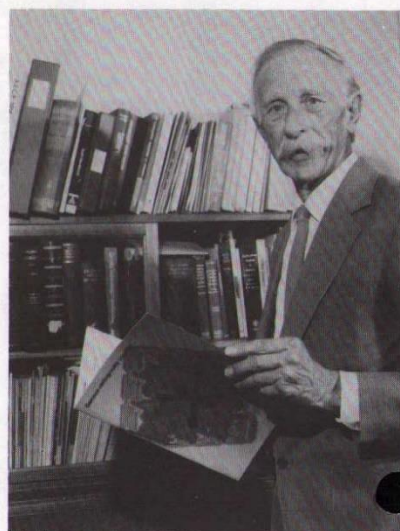
To all teams who have not received details about the Rounders Tournament, but wish to participate.

Please will all would-be captains send a list of all team members, including two umpires, with their appropriate Rec. Assoc. membership numbers and 50p entry fee per team, to either Carol Costello or Judith Smith, Photographic, Bldg. 354.11.

Will you also indicate whether you require changing facilities for men (south pavilion) or ladies (north pavilion) so that we can arrange for keys to be available.

HARWELL INDUSTRIAL SUGGESTIONS AWARDS

G. Rixon	Chem. Tech.	£15
C. Embling	RRD	£15
Mrs. R. O'Regan	RRD	£15
R. Keller	RRD	£15
H. Camm	EDMD	£15
M.W.H. Hearmon	RRD	£25
W.J. O'Neill, B.J. Price and E. Meers	Cont./Stores	£15
A.R. Sibley and C. Tait	RRD	£15
A.R. Sibley and C. Tait		£15
C. Embling	RRD	£15
P. Lewer	EDMD	£15
L. Ward	EDMD	£15
M. Wigmore	E&MSc	£15
B.S. Fulker	EDMD	£150
S.C. Luker and C. Costello	Chem.Tech.	£15
R. Keller	RRD	£15
M. Day	Chem.Tech.	£35
M. Day	Chem.Tech.	£25
J.A. Pike and G.S. Wixey	EPD	£15
J.A. Pike and G.S. Wixey	EPD	£15
J.A. Pike	EPD	£15
N.E. Goodenough	MDD	£300
F.A. Pine	RRD	£15



AMERSHAM SAYS GOODBYE

Bob West, Technical Manager of Amersham International's Isotope Production Unit at HARWELL, retired on 31 May after nearly 39 years association with the production of radioactive isotopes, for medical, research and industrial uses.

Bob, a native of Dorset, studied Aeronautics at Southampton University, but in 1940 the Department was 'bombed out' as was Vickers Armstrong Supermarine Aviation, where he worked on Spitfire fighter aircraft. He then joined the TRE outpost near Swanage, working on airborne centimetre radar and subsequently on pathfinder radar at Malvern.

In 1946 he led a small team at the Cavendish Laboratory, Cambridge, restarting and using the 37-inch cyclotron there to produce small quantities of radioactive isotopes (including ^{131}I , ^{32}P and ^{24}Na) for early uses in medical research.

In 1947 he moved to HARWELL to join the team which prepared the first reactor-produced radioactive isotopes initially in GLEEP, and from 1948 in BEPO. As a member of the Isotope Division, he had responsibilities for isotope production development and operations using the reactors, and saw the applications and needs for isotopes increase rapidly, particularly after transferring production to the newly commissioned DIDO and PLUTO reactors. In 1959, the Isotope Production Unit was formed with Bob in charge as Technical Manager, as part of the Radiochemical Centre at Amersham, which in 1981 became Amersham International.

During his career Bob has seen the needs rise from the first samples which took days to produce at Cambridge to the present rate of some 1500 items shipped each day from Amersham to all parts of the world. In recognition of his contributions, Bob was awarded a Queen's Coronation Medal in 1953 and the MBE in 1975.

Bob, a vintage car enthusiast, lives with his wife in Chilton and from 1 June hopes to spend more time on his collection of grape vines.

Financial Corner

With the US Dow-Jones Share Index exceeding 1300 for the first time and the UK FT Ordinary Share Index over 1000, the financial markets look healthy; also the British national output continues to grow at 3%. The dollar exchange rate is rising gently toward \$1.30 to £1 (good for the Editor holidaying in Florida). But the Retail Price Index for April was 373.9 reflecting an annual rate of inflation of 6.9%. Index-linked investments ought to be reconsidered, e.g. Savings Certificates which give a 3% annual bonus to October 1985 plus a bonus of 4% at the end of five years, corresponding to around 10.7% tax free at present.

British Aerospace partly-paid shares were on offer at 200p but oversubscribed five-fold. Those who applied for 100 or 200 shares were allocated 100 with even more severe scaling for those applying for larger numbers. The preferential treatment of small investors shows the advantage of a husband and wife team making separate applications. The BA partly-paid shares are being re-sold at ~240p, a 20% premium and much smaller than the British Telecom 50p shares now at around 160p (>200% premium).

Unit Trusts v. Life Insurance. Since the abolition of income tax relief on Life Insurance premiums, regular saving by purchase of unit trusts looks more favourable. A recent survey by 'Planned Savings' compares the benefits paid at the end of 15 years, for an investment of £20/month for a man aged 29 at the outset. The average returns are General Unit Trust: £14,505; Unit-Linked Life Insurance: £10,709; with-profits life policy: £8,010. But there can be wide variations between companies, unit trusts and the state of the financial market.

Interest Rates on Personal Loans (currently 11-12%) correspond to a true Annual Percentage Rate of 22-24%. Credit cards are useful for short-term borrowing (20% APR over six months but rising to 27% APR over a year). Some 'In-house' credit is even more expensive, e.g. M&S 28%, Boots 30% and Burtons 38% APR.

Barclays Bank is now charging other banks' customers 75p for cashing cheques each week-day (up from 50p) and £2 on a Saturday.

Vehicle Licences run from the first day of each month whatever date the vehicle is first registered. After three years an MOT certificate is required before a licence can be issued. It could be advantageous to have the licensing year 'out-of-phase' with the annual MOT. This can be achieved by arranging a six-month licence costing £55. The unspent £45, if wisely invested, can increase to >£47 at the end of six months so that the actual cost is <£3.

ABINGDON AND DISTRICT MUSCULAR DYSTROPHY GROUP - SUMMER FETE, on 22 June at 2.00 p.m. To be opened by Dave Freeman of Radio Oxford, in the Abbey Grounds, Abingdon. Tombola, side-shows, books, balloon race, entertainments, teas, hot dogs. Admission Free!

BLEWBURY FESTIVAL '85

8 to 23 JUNE

A large programme of events, including an Ox Roast and Morris Dancers, a Flower Festival, a Bridge Tournament, and a Garden Party and Concert have been organised to celebrate this year's festival.

EAST HENDRED BARN DANCE AND BARBECUE

Chemical Engineering Division and Chemistry Division are holding a Barn Dance and Barbecue on Friday, 14 June from 7.30 p.m. to midnight at Snell's Hall, East Hendred. Everybody welcome. Dancing to Joe Marns and the Waylanders. Tickets £4 each. Contacts: Mrs. J. Briggs, Bldg. 351.15, Ext. 4092; Mrs. J. Yates, Bldg. 175, Ext. 3144; D. Baker, Bldg. 353, Ext. 4816 and Mrs. J. Wells, Bldg. 220, Ext. 4244.

STEVENTON - CAR BOOT SALE on Saturday, 8 June from 9.30 a.m. to 3.00 p.m. in barn behind Stocks Lane Farmhouse. Admission and parking free. Pitches £5 booked in advance. For further information ring David Sandford, NRPB 339 or Abingdon

WALLINGFORD CORN EXCHANGE:

Saturday, 22 June sees the first visit to this theatre by a Welsh choir - the award-winning Morlais Male Voice Choir from the Rhondda Valley. Forty-five Welshmen will be singing their hearts out in aid of the Oxfordshire Dyslexia Association, and to aid the choir - or to give them a rest! - will be the operatic singers Helen Edwards, soprano, and David Chalford, baritone. The concert will start at 7.45 p.m. and tickets at £2.50 can be obtained at the Box Office on Fridays and Saturdays from 10.00 a.m. to 12.00 noon, or on the evening of the performance (you'll be lucky!) or order them through Patrick Williams in ETSU, on 12-267.

WANTAGE SILVER BAND will be holding their Annual Fete on Saturday, 8 June at Garston Lane School, Wantage starting at 2.00 p.m. Raffle, refreshments, stalls, entertainment in the arena, three bands.

WANTAGE MUSIC FESTIVAL

The ninth annual Wantage Music Festival will take place at St. Mary's School, Wantage between 16 and 21 July. Classes are offered in piano, strings, woodwind, brass, choral and vocal sections, with a number of new classes suggested by last years participants. Adjudicators include Richard Deering (back by popular demand), Louis Carus, Noel Cox and Ann-Francis Ellis. A copy of the syllabus, with entry forms, is available from Tim Field, Cul. Lab. 3533.

RECREATIONAL ASSOCIATION

BAR SPORTS CLUB

The AGM of the Bar Sports Club will take place at 7.30 p.m. on Monday, 17 June in the Social Club Committee Room. Members and non-members welcome.

FOOTBALL CLUB

The AGM will be held in the Main Hall of the Social Club on Wednesday, 26 June. Members - old and new - are welcome. You are reminded that motions should be received by the Secretary - Bob Gibbs, Rm.G16, Bldg. 424 - by 12 June.

JUDO CLUB

We are offering a beginners course for adults only on Wednesday evenings starting soon. For details ring Dave Baker, SERC 6274/5335 or Abingdon

KARATE CLUB

The Harwell Higashi Karate Kai trains in the Social Club on Wednesday evenings from 8.00 p.m. to 10.00 p.m. All former members welcome, also anyone wishing to learn. For further information phone Phil on Ext. 5027 or just come along on Wednesdays.

SQUASH CLUB

Season 1984-1985: Men. Report by Phil Lawrence

The Harwell 1st team had a very successful season, winning Division 2 of the Oxfordshire Squash League, and their consistent high standard was helped by keeping an almost unchanged team. The other three teams could not match this fine achievement however, and whilst the 2nd team finished in mid-table, the other two teams were relegated from Divisions 5 and 6. The 3rd and 4th teams finished the season well, but had to pay the penalty of poor start to the season, due mainly to weakened sides and inconsistent play.

The Award for the Best Matchplayer in the Club went to Malcolm Edwards for his very steady play in the 1st team, achieving a win rate of over 90%. The Edwards Cup was again won by Mark Cairns, while Will Johnston was the winner of the Winter Handicap Cup, beating Brian Phillips in the Final. The Interdivisional Trophy was won for the second successive year by Materials Development Division, represented by Roger Bones, John Stewart and Ian Bland.

VOLLEYBALL CLUB

A fitting end to the volleyball season resulted in a win in straight sets, 3-0, against Oxford Polytechnic our rival for the top of the league. We must now wait to find out if we get our well-earned promotion to the 1st Division for next season. I would like to take this opportunity to thank all the members for the effort that has been put into the club; well played everyone. A special thanks to Akeel Al-Kazwini, our captain, who played in every match (and for the final match came straight from the airport to play). All the club is pleased to see Harry Morley back playing team volleyball after an ankle injury incurred during a match earlier in the season.

Practices: Thursday evenings, 5.15 p.m. in the Air Hall.

ALEXANDRA ROSE WEEK

10 to 14 JUNE 1985

This fund-raising organisation gives help to hospitals in this area which care for both children and adults who are terminally sick. **Please give generously this year.**

FLOWER FESTIVAL

To be held at Wantage Methodist Church on Saturday, 8 June from 10.00 a.m. to 4.00 p.m. and Sunday, 9 June from 2.00 p.m. to 5.00 p.m.

RNLI COLLECTION

The total raised in the official RNLI collection at the Shopping Centre during the week 15 to 19 April was £79.33, this is £8 more than the last collection in April 1984. Many thanks to all those who donated so generously, and to the volunteers who did the collecting.

'AROUND THE WORLD TEA TOWELS'

A unique display of tea towels will be on show on Saturday, 8 June at St. Peter's Church Hall, Newlands Avenue, Didcot. Bring and Buy. Admission 50p. Coffee morning 10.30 a.m. to 12.00 noon; teas 2.30 p.m. to 5.00 p.m.

FREE OFFER COUPONS

The Didcot Cancer Research Committee would be grateful for the donation of any 'Free Offer' coupons for items offered by manufacturers (e.g. kitchen utensils, coffee mugs, tea towels, etc.) to aid our fund-raising activities. Please send coupons to Mrs. S.H. Wilcox, EDMD, Bldg. 424, Ext. 2523. Thank you in advance for your help.

We would also be grateful if anyone over the age of 16 could spare an hour to help us with our Street Collection on 28 September in Didcot.

FUN RUN

Blewbury Festival "Five". Five-mile Fun Run at 3.00 p.m. on Saturday, 22 June. Start and finish at Blewbury Recreation Ground. Part of Village Events Day so plenty for the family to see and do while you run. Details from Angwin Marples, Ext. 4890 or Blewbury

RAMBLERS ASSOCIATION

Sunday, 9 June: 10.15 a.m., 726957, Cow Lease Wood car park, 10 miles in Chilterns.

Monday, 10 June: 6.30 p.m., 289955, Faringdon Market Place, 7 miles evening walk.

Friday, 21 June: 11.00 p.m., 294866, White Horse Hill lower car park, all night walk.

Saturday, 22 June: 11.00 a.m., 572047, Horspath P.O. 5 miles on improved paths, pub stop.

Sunday, 23 June: 10.00 a.m., 514055, Folly Bridge, Oxford. Golden Jubilee walk on 10 mile route opened by the Lord Mayor of Oxford at 10.00 a.m.

Further details from John Bromley, Ext. 4795.

Classified Advertisements

FOR SALE

SIDEBOARD, light oak veneer with glass cabinet, £40 ono. Abingdon evenings.

CARAVAN, Cygnet 10, 2/3 berth, toilet, awning, 2 gas bottles, £500. Cul. Lab. 3679.

FREE-STANDING WALL UNIT, 6'x6', comprises two cupboards, one drinks cabinet, three bookshelves, two display areas, £100. Buyer collects. Didcot

RIMA INFRA-RED COOKING CENTRE, with recipe booklet, £15. Didcot

HENDERSON GALVANISED GARAGE DOOR complete with mechanism and wood surround, excellent condition. SERC 5425 or Wantage

HOTPOINT TOP LOADING AUTOMATIC WASHER, excellent condition, new kitchen forces sale, £100; CARAVAN AWNING, suit 14'/15' van, as new, £100. Hoskins, SERC 6185 or Didcot

TRAILER, 48"x32"x27", wood cover, electrics, £60. Wantage

VIOLIN, as new, £35 ono. SERC 5275 until 2.00 p.m., Abingdon after 3.00 p.m.

FRAME TENT, six berth Cabanon, £120 ono. Abingdon evenings.

HI-FI HITACHI SDT120 MUSIC CENTRE, good condition, £50. Ext. 2008 or Cholsey

KENWOOD LIQUIDISER, £7.50; MOULINEX JUICE EXTRACTOR, as new, £15; 3' SINGLE BED with storage space, £20. Abingdon evenings.

RALEIGH 'BOBCAT' BICYCLE with detachable stabilisers, suit 3-6 years. Ext. 2420 or Wantage

PEDRO GRP MOTOR SAILER, 17'6", 2-berth, alloy spars, terylene sails, pulpit, rails, 1984 4 hp mariner outboard trailer, £995 ono. Wantage

GOLF ROTOVATOR, 2.5 hp, 15 hours running only, vgc, £95 ono. D. Flynn, Ext. 4694 or Didcot

TRICITY CHEST FREEZER, 12 cu.ft.; TRICITY FRIDGE, 6 cu.ft. £10 each. MRC 295.

KODAK INSTAMATIC 177X with carrying case, £10 ono; LADY'S TIMEX SLIMLINE QUARTZ DIGITAL WATCH, £5. Ext. 4049.

PHOTOGRAPHIC ACCESSORY BELT, £8; PHOTOGRAPHIC MONOCULAR with zoom attachment Praktica Pentax thread, £30; COFFEE TABLE, hardwood frame, tiled top, £25. Wantage

FREE, rabbit hutch and two male rabbits. Wantage

MOTOR MOWER, Suffolk Punch Mk.VII, £30. Abingdon

TWO SWIVEL CHAIRS and two-seater sofa, £100 ono. Ext. 4029.

FIGURE TRIM MUSCLE TONER, mint condition, £65 ono. Wantage

KNITTING MACHINE, Jones 840, vgc, £90 ono. Wantage

'CAMPING BOX' REFRIGERATOR, Electrolux model RC160, 1.2 cu.ft. gas, mains, or 12V electricity, as new, £85. Didcot

GAS COOKER, Carron Cordon Bleu 4, double oven, grill, 4 burners, griddle, £350 ono. Wantage or

ENCYCLOPEDIA OF AIRCRAFT, 13 volumes complete, total cost £165, any reasonable offer will be considered. Wantage or

CARAVAN, Piper Clubman, 1980, 2-berth, used three times, excellent condition, £1,400 ono. Ext. 5019 or Abingdon

MOTHERCARE TRAVELLER PRAM, navy blue, excellent condition, complete with back rest and shopping tray, spring chrome chassis, £60. Abingdon after 2.00 p.m.

COMMODORE 64 COMPUTER, tape unit, tapes and manual, £250 ono. Ext. 2747.

COLOUR TV, GEC, 20", £50. Abingdon

GOLF CLUBS, 'Lynx' woods, driver and 4 wood, matched, good condition, £35. Coulson, Ext. 2031 or Abingdon

SINGLE WARDROBE, light oak, good condition, £10 ono. Didcot

BABY BELLING ELECTRIC COOKER, £65; S/S KITCHEN SINK, right hand drainer, £5; STORAGE HEATER, 2 kW, £15. Horton-Rackstraw, Ext. 3249.

SPRAY GUN HIGH PRESSURE COMPRESSOR, 30' hose, £70. Wantage

LADY'S BICYCLE, 3-speed, £48 ono; YOUTH'S CHOPPER BICYCLE, £48 ono. Ext. 5082 or Oxford

SWINGDOWN OUTBOARD MOTOR BRACKET, unused, £35; AVON LIFE JACKETS (2), excellent condition, £15 each; TRAILER TAILBOARD, elec. wired, 7' wide, £7. Ext. 2512 or Abingdon

ELECTRIC COOKER, working, eye-level grill needs repair. Abingdon

BOX TRAILER, 'Carsprings', 5'x3', including electrics, tailgate and waterproof cover, £100. Carpenter, Ext. 2593 or Abingdon

UNION JACK, authentic, full size, unused, £20. Carpenter, Ext. 2593 or Abingdon

FOOD PROCESSOR + attachments, £40; ESPRESSO COFFEE MAKER, £50; TRAINING WEIGHTS, £20; TELESCOPE, 3 1/2" reflector, £110; TWO BAR STOOLS, £5; SINK UNITS: single drainer, £7; double, £10; TWO-PIECE SUITE, £20. Penny, Ext. 4393.

WATER LILIES POND PLANTS. Ext. 4393 or Blewbury

CHEST FREEZER, LEC, 9.1 cu.ft, 5 years old, £50. Wantage

ZX SPECTRUM, 48k, plus cassette recorder and software, £60 ono. Wantage

PRONUPTIA WEDDING DRESS, size 12, rich cream watered satin, classical style, immaculate condition, should be seen, £75 ono; MATCHING HAT AND PARASOL, optional, £25 ono. Wallingford

GLASS-TOPPED BREAKFAST TABLE + chairs, £50; DOUBLE WALL UNIT, smoked glass doors, £75. Ext. 2104 or Abingdon

CARS, MOTORCYCLES ETC.

LOTUS EUROPA SPECIAL, 1975, new carpets, battery, s/s exhaust, used as second car hence 54,000 miles, tax/MOT until September, £3,500. SERC 6477 or Wantage evenings and weekends.

TALBOT HORIZON, 1.5 automatic, September 1982, cherry red, vgc, £3,000. Abingdon Ext. 300 (business hours).

VOLKSWAGEN BEETLE, 1970, good runner, year's MOT, taxed, £300. Oxford

ESCORT ESTATE 1300, T reg, MOT to April 1986, taxed end 1985, one owner, £950 ono. SERC 5459 or Blewbury

ALLEGRO ESTATE, T reg, blue, 45,000 miles, taxed to November, MOT to May 1986, one owner. SERC 5467 or Wantage after mid-day.

BMW 2000, 1972, 44,000 miles, MOT until October, generally good condition, £400. Ext. 3227 or Oxford

HONDA CB100N, V reg, MOT and tax April 1986, £250 ono. Abingdon

FORD CORTINA 1600GL, 1979 T reg, 73,000 miles, very good condition, white, 12 months MOT, 6 months tax, £995 ono. Wantage evenings.

HONDA CD185T, 1980, taxed and MOT, ideal commuter, £80 ono. Ext. 3205 or Wantage

SUZUKI FZ50, 2,110 miles, MOT August, tax July, £160 ono; CRASH HELMET, £9. Thatcham

Z200, W reg, long tax, MOT, new chain/sprockets, with rack and manual, new bike forces sale, £150 ono. Bob, Ext. 3170.

AVENGER 1250DL, 1973, mechanically/bodily sound, below average mileage, fitted carpets, radio, fog lamps, etc, MOT May 1986, taxed, £350. Ext. 3025.

MARINA 1300, V reg, good condition, cassette, £875 ono. Oxford evenings and weekends.

FORD CORTINA 2000E automatic, P reg, MOT, 82,000 miles, low mileage tyres, well maintained, good condition, £500 ono. Ext. 5082 or Oxford

MK.III CORTINA WINDSCREEN, rear bumper, steering rack, rear axle, 5" dia. round headlamps with halogen bulbs. Numerous other spares - garage clearing. Offers to Tony Betteridge, Ext. 3296 (Monday to Friday), Abingdon (evenings and weekends).

MORRIS TRAVELLER, front end offside damage, breaking or repair, new rear-front wings. Abingdon

INERTIA SEAT BELTS, virtually new from MOT failed Viva, £10. Ext. 5218 or Wantage

HILLMAN IMP SPARES, wheels, tyres, brake linings etc. Offers to Abingdon evenings.

ACCOMMODATION

GROVE, large non-estate 3-bedroomed semi-detached house, lounge, kitchen/dining room, gardens, garage, open outlook, £42,500. Wantage

ROOM TO LET, Chilton village, all facilities available. Abingdon

DIDCOT, superb end terrace cottage, 2 double bedrooms, luxury bathroom, fitted kitchen, dining room, lounge, open fireplace, cloakroom, porch, large garden, g.c.h., double glazing, £36,500. Didcot

CHADDLEWORTH, semi-detached chalet bungalow, 2/3 double bedrooms, 1/2 receptions, fitted kitchen/breakfast room, garage, small secluded garden, on AERE bus route, £49,000 ono. R. Blake, Newbury 8.00 a.m. to 6.00 p.m.

SOUTHMOOR, 3-bedroom semi-detached, gas central heating, built-in wardrobes, separate bathroom/toilet, lounge/diner, pine fitted kitchen, garage, utility room, patio/garden, £38,000. Ext. 2078 or Longworth

SECOND PERSON REQUIRED to share fully furnished house, suit professional person or similar status, share all facilities, £30 per week inclusive. Didcot after 7.00 p.m.

MARCHAM, spacious 3-bedroomed semi with garage, workshop, utility, cloakroom, screened garden, £42,950. SERC 5476.

WANTAGE, modern 3 bedroomed semi-detached house, large living room and dining room, large kitchen, gardens, garage, £42,500. Ext. 2726 or Wantage

HOUSE REQUIRED for visiting scientist and family (2+2) July/August. Johnson, Cul. Lab. 3451.

HOLIDAY ACCOMMODATION

CORNISH COTTAGE, 2 miles Newquay, sleeps six, all mod. con., no pets, week 15-22 June available. R. Keep, Ext. 4810 or Reading

FOR HIRE 14' touring caravan, 4-berth, good condition, towing vehicle required 1600, from £50 per week. Wantage after 5.00 p.m.

DORDOGNE, beautiful secluded licensed farmhouse hotel, good food and wine, private bathrooms. Week tariff BB&ED inc. wines, taxes, F.F.1120. Rose des Vents, St. Paul Lizonne, 24320 Verteillac, France. Tel: I.G. Anderson.

COTSWOLD COTTAGES, five miles Chipping Norton, 2-3 bedrooms, garage, secluded gardens, available throughout year. Write please to K.K. George, Bldg. 424, AERE.

ALICANTE, SPAIN, to let luxury furnished flat, sleeps 5, 2 bathrooms, fully equipped kitchen, few minutes beach, marina, city centre, £90 per week. Ext. 4240 or (0734)

CALPE, SPAIN, to let, attractive furnished flat, sleeps 4/5, private swimming pool, two balconies overlooking harbour and beach, some dates still available. Ext. 4267.

ABINGDON, holiday house wanted July, two weeks, small family. JET 4468 or Abingdon

DORSET, near Poole, caravan for two adults, quiet site. Abingdon

SOUTHWEST WALES, 3-bedroomed self-contained chalet, seaside holiday centre, heated pool, safe sandy beach. Newbury

WANTED

STUDENT EXCHANGE, 14-15 year French girl, Grenoble, 3 weeks summer, supervised family atmosphere. Hewat, SERC 5683.

AERO MODELLING bits and pieces wanted for beginner. Bud, Ext. 2988.

LIFTS

DRIVER WANTED for car pool, Southmoor, Longworth, Hinton Waldrist. Contact Alan Hooper, Ext. 4811 or Pete Flynn, SERC 6348.

Published by HARWELL PR GROUP

News

Editor Dagmar Smyth extension 2104 Design Studio, B328

Advertisements

HARWELL Cash Office by noon of deadline date

Culham, SERC, Cash Offices by noon day before deadline date

Deadline

Tuesday 11 June / Tuesday 25 June

Publication

Thursday 20 June / 4 July

Harlequin

NEWS SHEET

SUPPLEMENT

HARWELL • CULHAM • JET • RUTHERFORD APPLETON • NRPB • MRC



PEDALLING FOR HOME?

The HARWELL Apprentice Association is again organising a Charity Pedal Car Race. The event is being held in the HARWELL Bus Park on Sunday, 30 June from 11.00 a.m. to 6.00 p.m. The proceeds from this event are going to the Home Farm Trust Home for Mentally Handicapped People at Milton Heights (see over for details).

Last year the HARWELL apprentices car completed 329 laps of a 1/4-mile circuit. The event raise a total of £2,200 for the Multiple Sclerosis Society. This year we are hoping to do as well again and are relying on your support.

Will you please sponsor? If so, please complete the form below. (Last year on average 5p per 10 laps amounted to £1.50.)

Please return slip to Pedal Car, Bldg. 501, AERE Harwell.

PEDAL CAR 1985

Name Bldg. Ext.

I wish to sponsor the HARWELL Apprentice Association Team atp per 10 laps completed in the seven-hour pedal car race.

Signed

Sponsors will be contacted after the event. Thank you.

THE HOME FARM TRUST

Director General – Rear Admiral K.H.G. Willis, CB, BA, FRSA

43/45 Queens Road, Clifton, Bristol, BS8 1QQ

Charity Registration No. 313069

The Home Farm Trust was founded 21 years ago by parents facing a shortage of facilities for their mentally handicapped children on leaving special school. It provides care, reassurance, training and work in a home environment which encourages maximum personal development.

The Trust's Home at Milton Heights was commissioned in 1982. Residents have a home for life and there is work in one of three disciplines, home, garden or craft.

Later this year the Home is opening its own shop for the direct sale of its products.