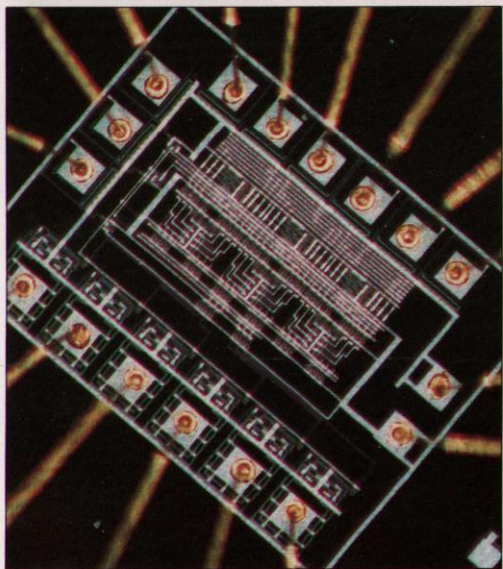
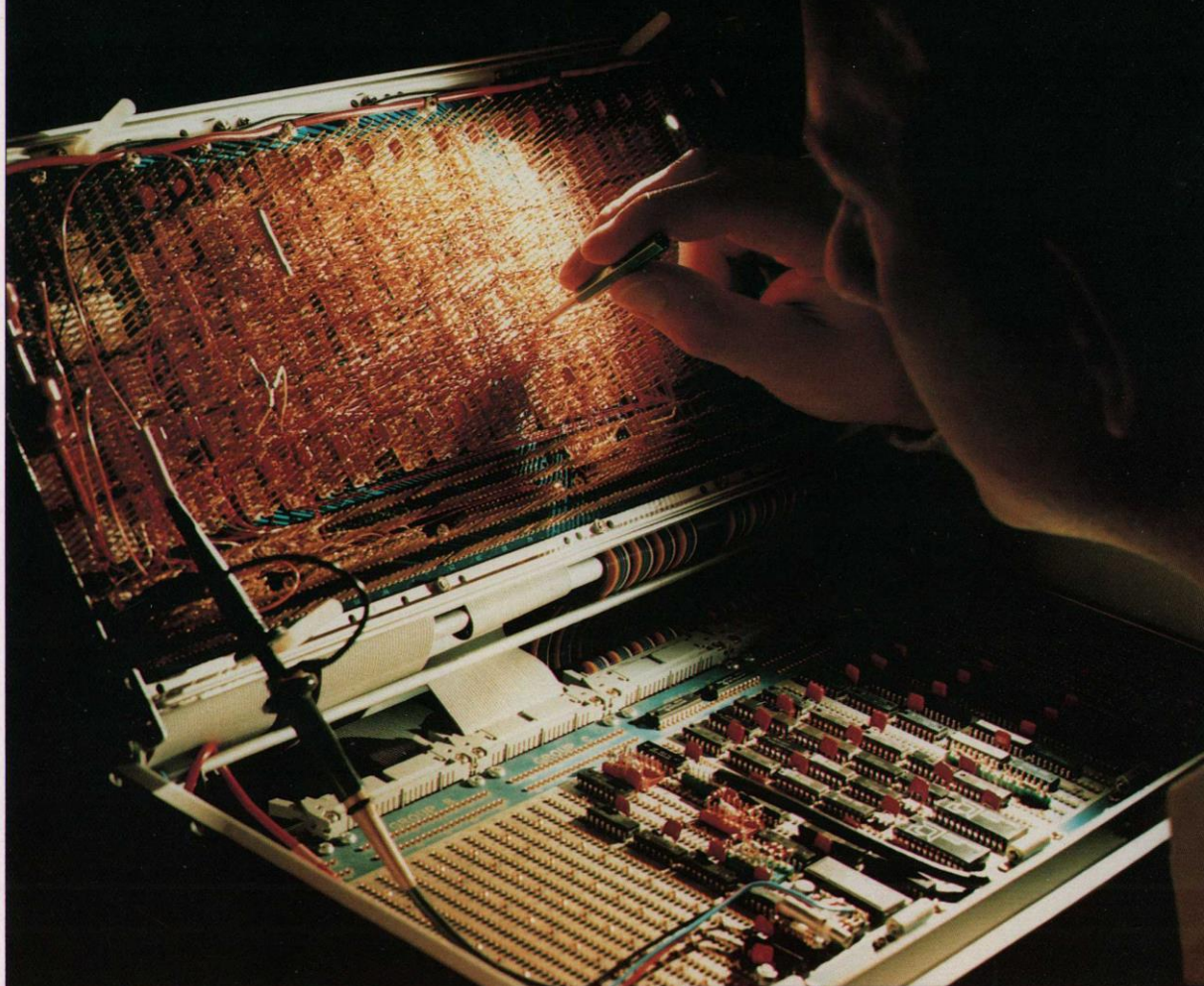
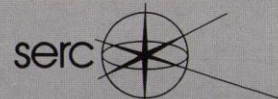


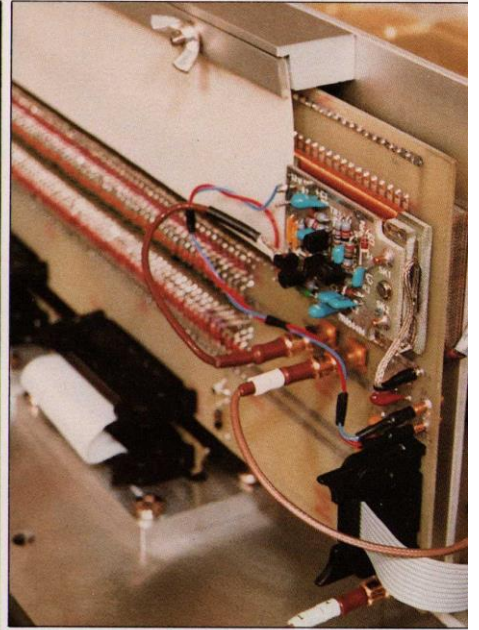
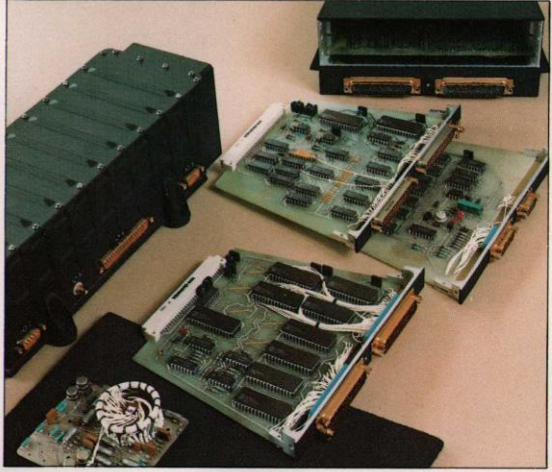
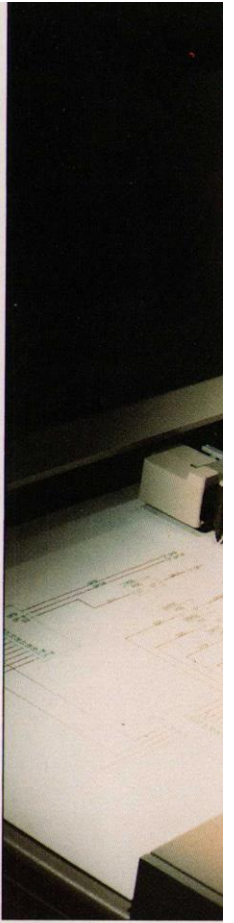
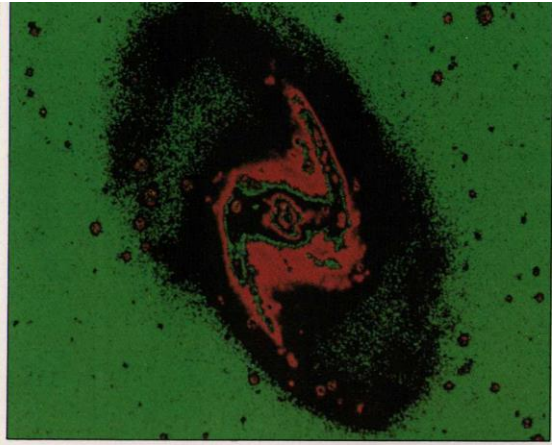
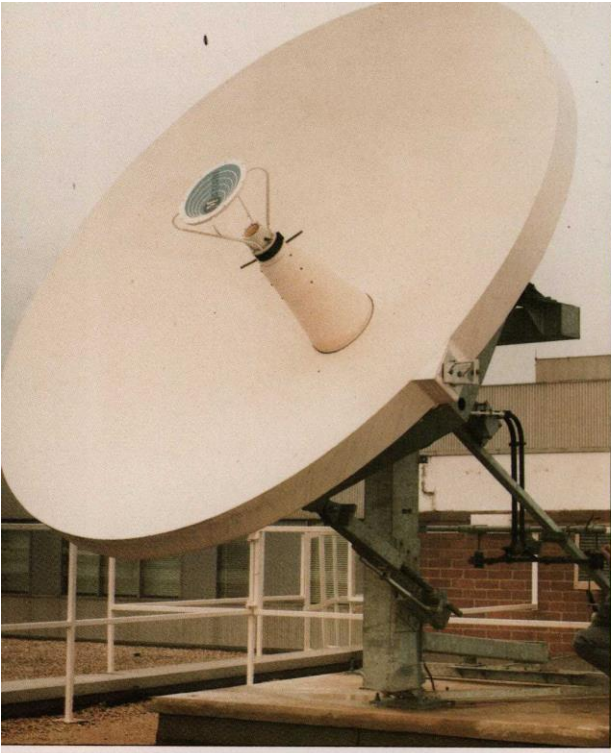
Electronics
Opportunities at

RAL



Rutherford Appleton Laboratory





OPPORTUNITIES AT RAL

As postgraduate research becomes more sophisticated, there is an increasing demand for facilities which are larger and more complicated than can reasonably be provided by individual university and polytechnic departments.

The Science and Engineering Research Council (SERC) was set up by the Government to provide funds and world-class facilities for academic research. SERC has four establishments, the largest being the Rutherford Appleton Laboratory (RAL) at Chilton in Oxfordshire.

RAL's activities span many fields, including particle physics, the physics of laser-produced plasmas, neutron beam research, radio, information technology, geophysics, astrophysics and space science. The success of these programs depends critically on the excellence of the engineering.

Among our staff of 1500 there is a wide range of scientific and engineering disciplines and skills. Many are actively engaged in collaborative research projects, whilst others provide essential support for experiments and facilities in the UK and overseas. There is a continuing demand for innovative design and for the development of sophisticated equipment requiring state-of-the-art electronics and advanced computing techniques.

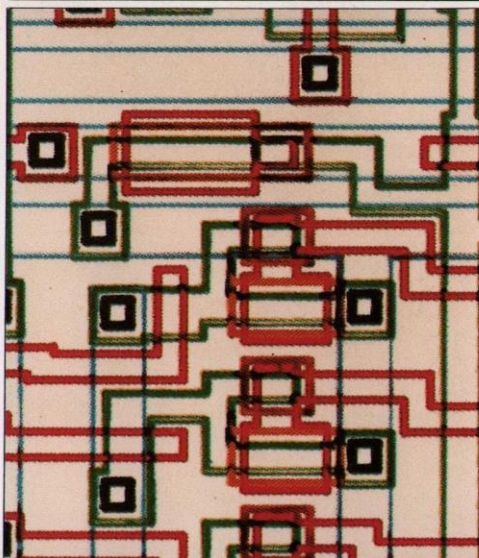
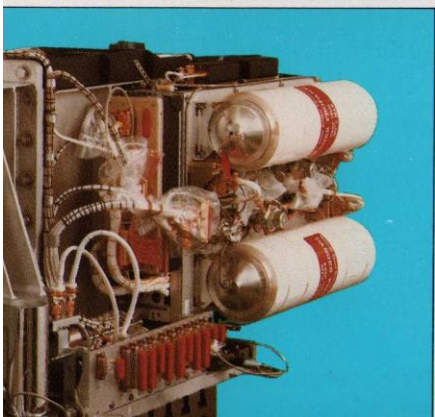
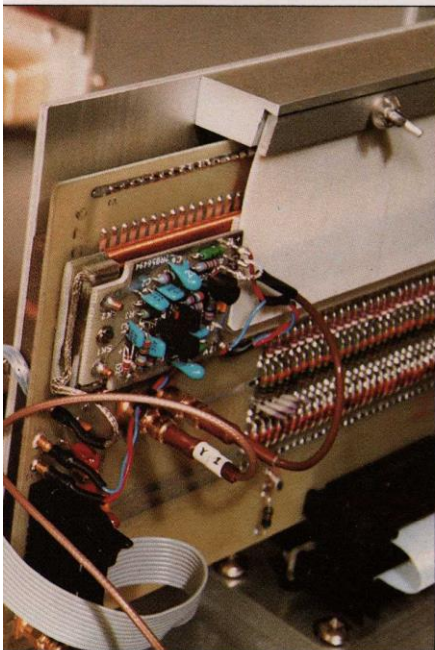
Each year we aim to recruit newly-qualified graduates to help maintain a balanced team of electronic engineers. We need graduates who are orientated towards research and development. There will be opportunities to work individually with scientists or to join a team of specialist engineers.

RAL provides an excellent foundation for a professional career due to the wide range of activities and our close links with the academic community and industry. There are unusually interesting possibilities for a long-term career; for the talented engineer, promotion prospects are good. For those interested primarily in the scientific and technical aspects of their subjects, these can be pursued with increasing financial reward for much longer than is usual in industry. For those with a broader interest there are opportunities for project management and for contributing to the wider management of science and engineering. These opportunities spring from the growing collaboration between SERC, academic departments and industry in forward-looking activities in fields such as satellite communication, integrated circuit design and computing.

In joining RAL you would be able to make an important contribution towards keeping the UK in the forefront of developments in science and technology.

Find out more about us by contacting the Personnel Department at:

Rutherford Appleton Laboratory
Chilton, Didcot, Oxon, OX11 0QX
Telephone: Abingdon (0235) 21900,
ext. 5510 or 5435.





RAL AT CHILTON

Chilton lies at the edge of the Berkshire Downs with excellent road and rail connections to all parts of the country. London is only 1 hour away by train from Didcot and there is easy access via the M4 to Heathrow Airport or to Wales and the West Country.

The surrounding towns and villages offer a choice of life style from the truly rural to the bustling city. The countryside is ideal for walking and riding, sailing and gliding, golf and other outdoor pursuits. You can fish the Thames, stroll around Oxford, hang-glide from White Horse Hill, go to a show in Reading or listen to baroque music in Wantage.

There is a wealth of local amateur productions in concert and choral music, opera and drama. There are various sporting activities ranging from cricket on the village green to organised events in the town sports centres. RAL also has many thriving recreational activities.

Although the local shops provide adequately for daily needs, there are centres at Oxford, Reading, Newbury and Swindon for major shopping expeditions. The area is well furnished with eating-places offering both traditional and international fare. The country pubs and inns are well worth exploring.

The area undoubtedly includes a community which will suit your particular taste and provide an ideal environment for both work and leisure.



Photo courtesy of Walton Films